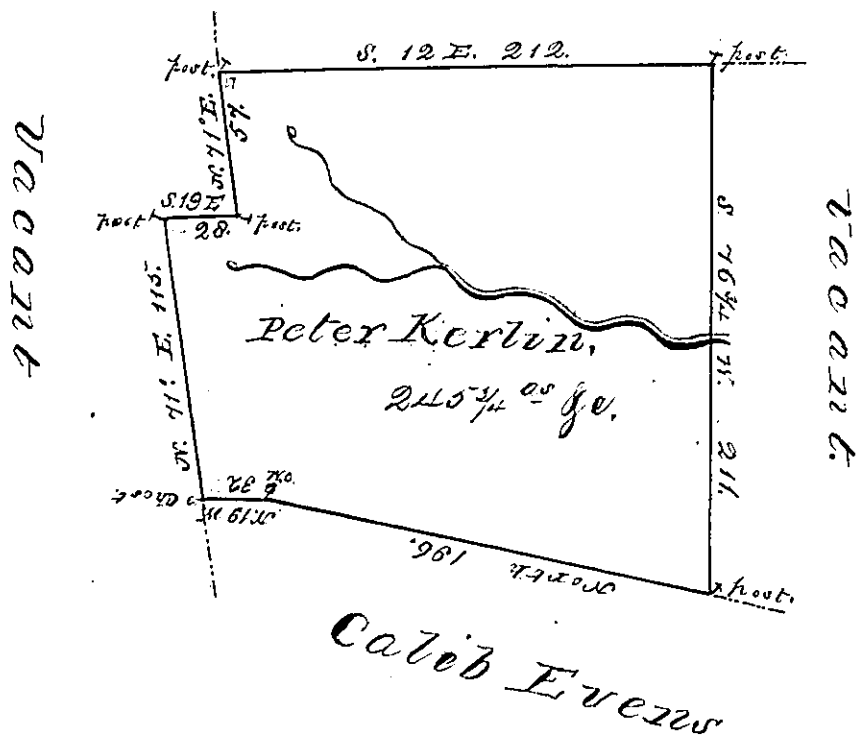


Sug. Loaf -
Luzerne.

Charles Cobin,



A draught of a tract of land called Situate
 on the water of Rescopeek joining Land
 Surveyed for Chas. Cobin: ye, in State Township
 Luzerne (formerly Northumb^d) County, containing
 two Hundred & forty five acres $\frac{3}{4}$ & allowance of
 Six p cent for Roads ye:

Surveyed for Peter Kerlin the 10th day of April
 1787 in Pursuance of a warrant dated the
 1st day of July 1784.

by
 Jm Gray S.D.

To John Lukens Esq^r.
 Suror: Genl.

IN TESTIMONY that the above is a copy of the original remaining on file in the
 Department of Internal Affairs of Pennsylvania, made con-
 formably to an Act of Assembly approved the 16th day of
 February, 1833, I have hereunto set my Hand and caused
 the Seal of said Department to be affixed at Harrisburg, this

Twenty Eighth day of July 1876

Wm W. Caudle
 Secretary of Internal Affairs